

Daily Weather Update

Coastal Area Around The Sri Lanka

Information Fusion Center-Colombo

Amperice

130j-2019

100

200

300

400

500

600

700

800

900

1000

1100

1200

1300

1400

1500

1600

1700

1800

1900

2000

2100

2200

2300

2400

2500

2600

2700

2800

2900

3000

3100

3200

3300

3400

3500

3600

3700

3800

3900

4000

4100

4200

4300

4400

4500

4600

4700

4800

4900

5000

5100

5200

5300

5400

5500

5600

5700

5800

5900

6000

6100

6200

6300

6400

6500

6600

6700

6800

6900

7000

7100

7200

7300

7400

7500

7600

7700

7800

7900

8000

8100

8200

8300

8400

8500

8600

8700

8800

8900

9000

9100

9200

9300

9400

9500

9600

9700

9800

9900

10000



Information Fusion Center
Colombo
Sri Lanka

Date 2026.05.21

FORMATION FUSION CENTER

WEATHER FORECAST FOR SEA AREAS AROUND THE ISLAND DURING NEXT 24 HOURS

Issued at 05.30 a.m. on 21 May 2026



**DEPARTMENT OF METEOROLOGY
SRI LANKA**

COLOMBO - SRI LANKA

CONDITION OF THE RAIN

Showers or thundershowers will occur at several places in the sea areas off the coast extending from Puttalam to Hambantota via Colombo and Galle.

Showers or thundershowers may occur at a few places elsewhere around the island in the evening or night.

WINDS

Winds will be southwesterly.

Wind speed will be (30-40) kmph.

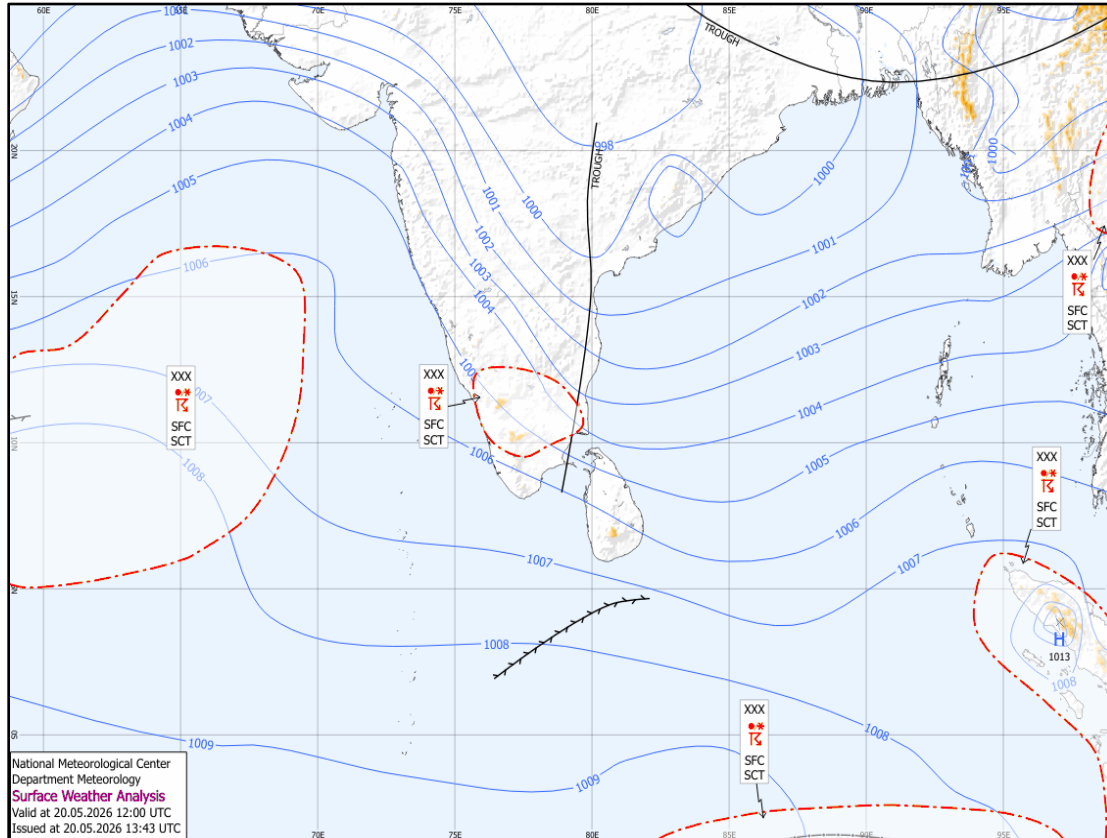
Wind speed can increase up to (50-60) kmph at times in the sea areas off the coast extending from Kankasanthurai to Puttalam via Mannar and from Galle to Pottuvil via Hambantota.

The wind speed may increase to about 50 kmph at times in the sea areas off the coast from Kankasanthurai to Batticaloa via Trincomalee and from Colombo to Galle.

STATE OF SEA

The sea areas off the coasts extending from Kankasanthurai to Puttalam via Mannar and from Galle to Pottuvil via Hambantota will be rough at times. The sea areas off the coast from Kankasanthurai to Batticaloa via Trincomalee and from Colombo to Galle will be fairly rough at times. The other sea areas around the island can be moderate. The wave height may increase (about 2.0 - 2.5m) in the sea areas off the coast extending from Mannar to Pottuvil via Puttalam, Colombo, Galle and Hambantota (this is not for land area). Temporarily strong gusty winds and very rough seas can be expected during thundershowers.

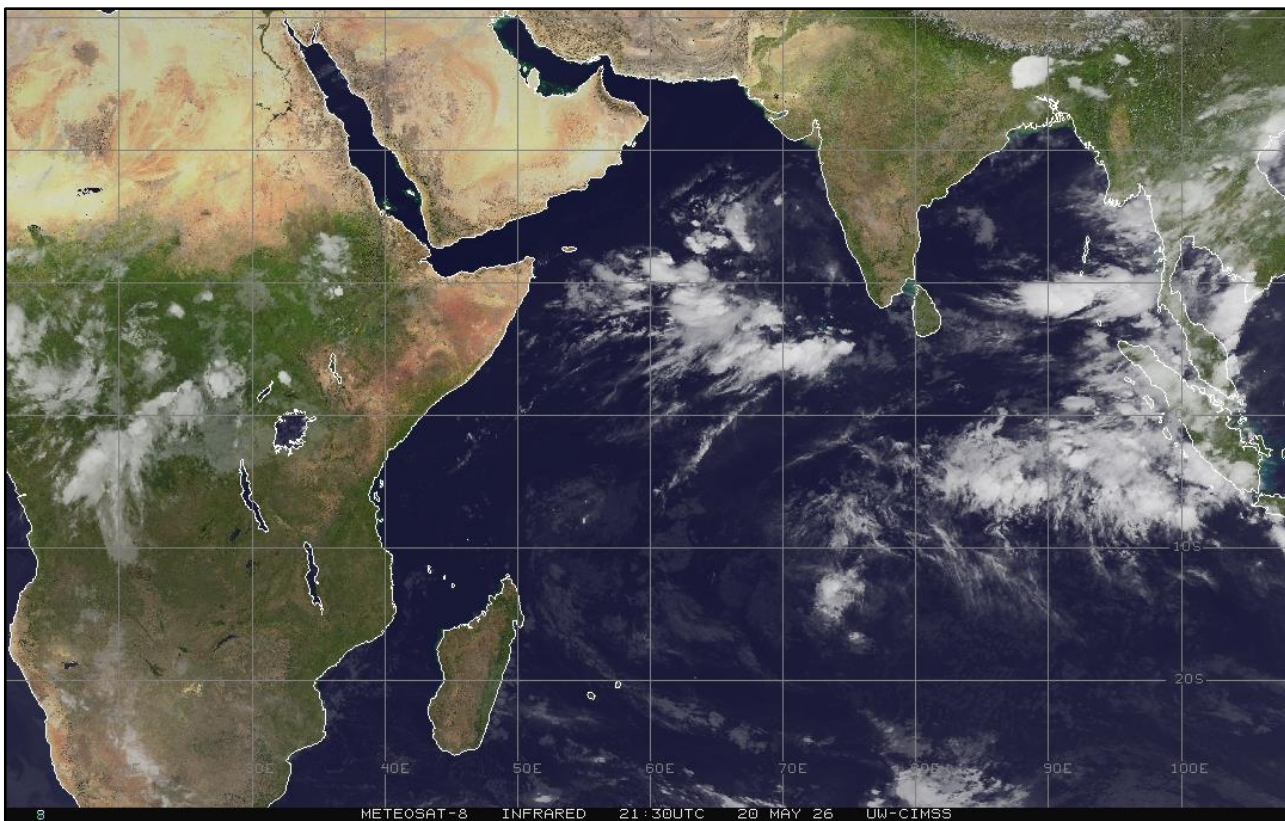
SURFACE ANALYSIS CHART



This analysis charts show the surface pressure pattern over Sri Lanka and the surrounding area. They display isobars (lines of equal pressure) and indicate areas of high (H) and low pressure (L) along with their central pressure value. Isobars are represented by solid blue lines, spaced every 1 hPa. High pressure is usually associated with mainly dry, settled weather with light winds, while low pressure is normally associated with unsettled weather, which is often wet and windy. The lower the pressure, generally the stronger the winds and the heavier the rain.

The map shows Coordinated Universal Time (UTC) and the local time is UTC+5.30.

SATELLITE IMAGE



21-May-26

IFC -Colombo



Information Fusion Center
Colombo
Sri Lanka

THANK YOU

The Officer Incharge
Information Fusion Centre - Colombo
Naval Headquarters, Colombo, Sri Lanka
+94 11 719 480 6
+94 74 120 4829
ifc@navy.lk
ifc.cbo@gmail.com